



TWEED
SHIRE COUNCIL

Rural Villages Strategy

Reference Panel
3 September 2014

Rural Villages Strategy Reference Panel

Wednesday 3 September 2014

4:30pm

Canvas and Kettle meeting room, Civic and Cultural Centre, Murwillumbah

Agenda items:

1. Summary of the consultation process.
2. Project management approach for the drafting stage.
3. Commencement of work of the Council Internal Reference Group (Project Assurance).
4. Proposed structure of the Rural Villages Strategy.
5. Overlaps with other Council strategies, particularly the Rural Land Strategy.
6. General discussion.
7. Next steps.

1. Summary of the consultation process

Feedback from Your Say Tweed

Rural Villages Strategy, Dreaming and Discovery (Phase 1)



Project: Rural Villages Strategy

Project page URL: www.yoursaytweed.com.au/ruralvillages

Reporting dates: Sunday 1 December 2013 - Friday 1 August 2014

Level of engagement

Community users

During the selected period, a total of **7997** people visited the Your Say Tweed site.

Aware

3239 people visited the [project page](#) for the Rural Villages Strategy on Your Say Tweed.

Informed

953 visitors (29%) took a secondary action while on the page (e.g. downloading a document, visiting another page on the site).

- **832** visitors viewed the document library.
- **35** visitors viewed the 'key dates' information to find out more about attending an information session.

1. Community meetings: common themes and ideas

Walking tracks to foster tourism.

Housing for a variety of people, shared housing, co-housing, options for seniors.

Do not want village to grow too much in size, new development must be sympathetic to the local character and respect the views.

Availability of services in the village: library van, better public transport, medical services.

Upgrades to existing infrastructure: footpaths, street lighting, parking, public toilets.

More public/community land in the villages.

Sustainable infrastructure - solar lighting.

Council need to support local businesses to create more jobs locally.

Reference to the previous, community based plans.

Other themes:

The Strategy should consider the culture of each village.

Council should allow for various initiatives, including aged care facilities, to be led by the local communities.

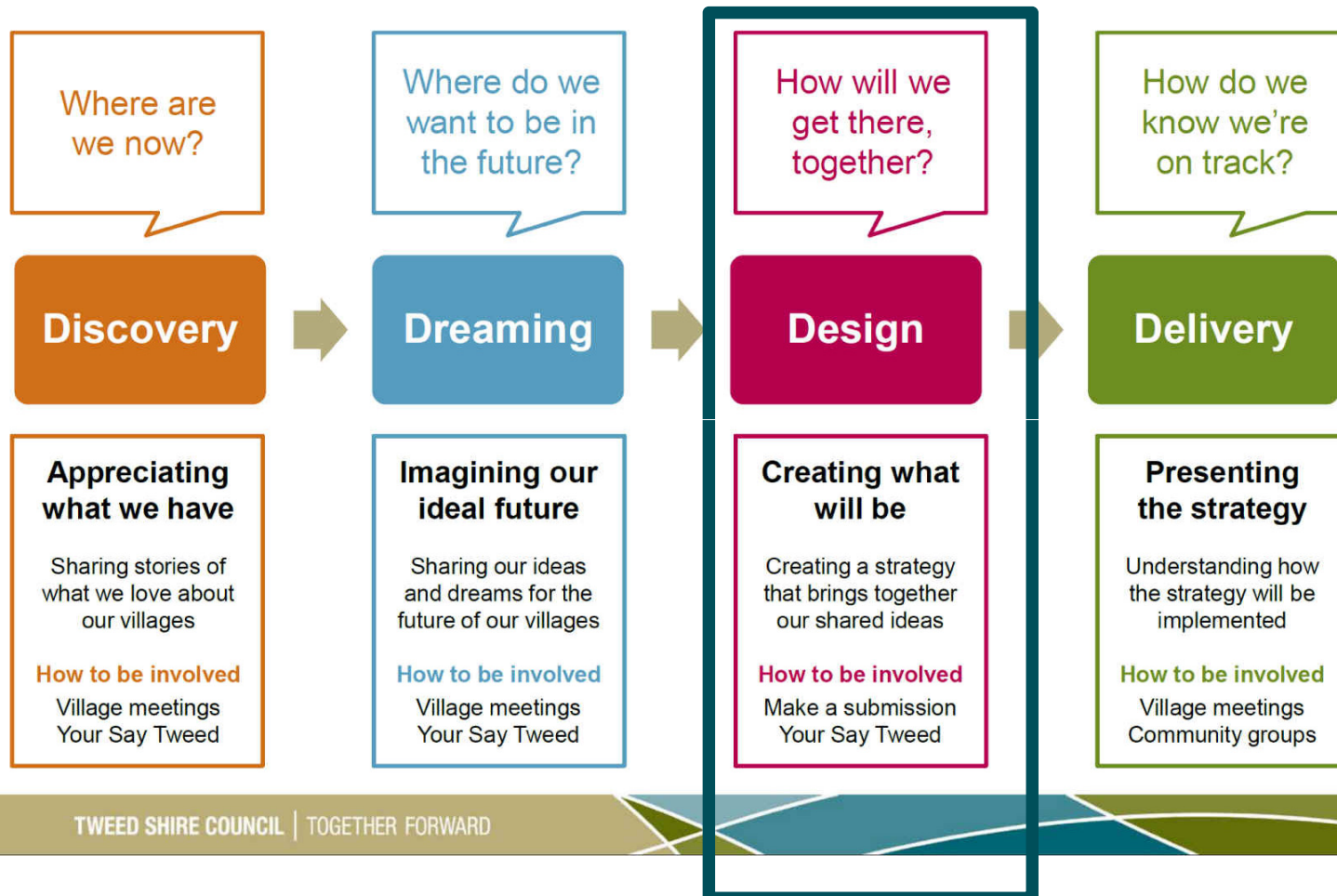
Linkages with the local creek.

Bring back the rail track.

Access to freeway.

The Strategy should promote the sense of community. Traffic is an issue, speeding through the village.

Rural Villages Strategy: our journey



TWEED SHIRE COUNCIL | TOGETHER FORWARD

2. Project management approach

Principles:

- Manage by stages,
- Focus on products,
- Tailor to suit local environment,
- Learn from experience,
- Defined roles and responsibilities.

Six aspects of project performance:

- Quality,
- Benefits,
- Timescale,
- Scope,
- Costs,
- Risks.



3. Council internal reference group

Structure: social planner, engineer, development assessment planner, sustainability officer, senior strategic planner, environmental planner, Destination Tweed.

Purpose of the group:

- to inform all relevant divisions within Council about the aims and objectives of the Rural Villages Strategy,
- to identify and deal with overlaps with other strategies and policies,
- to improve overall quality of the Strategy by ensuring that all actions are properly defined and prioritised.
- to advise on further internal consultations,
- to advise on the impact of proposed solutions.

4. Proposed structure of the Rural Villages Strategy



Part 1 - Introduction

Part 2 – The Region

Strategic intent

Strategic framework map

Acknowledgement of community based strategies and plan (CETP 2009 etc.).

Provision of infrastructure and essential services.

Assistance to local businesses.

Part 3 – The Villages

Burringbar
Chillingham
Crabbes Creek
Mooball
Stokers Siding
Tumbulgum
Tyalgum
Uki

key characteristics
vision statement
directions
“overview” map

Other villages:
Bilambil, Kunghur

Part 4 – Implementation of actions

5. Overlaps with other strategies

Rural Land Strategy

Tweed Economic Development Strategy

Cooperation with Destination Tweed

Thank you